

## Customer

Global Lighting OEM

## Overview

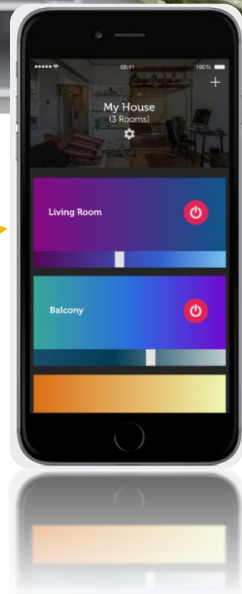
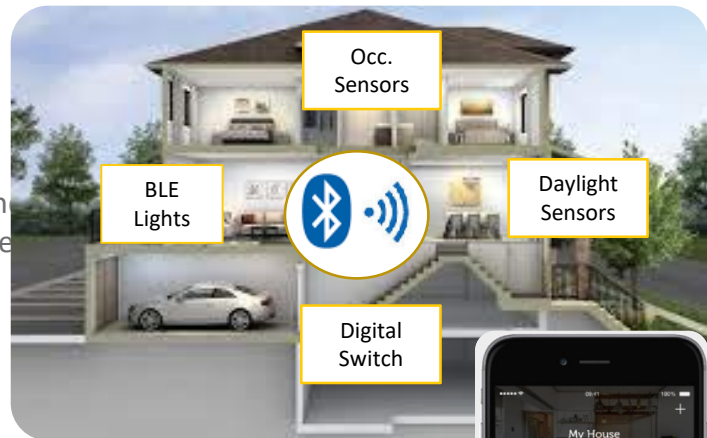
Enablement of BLE based wireless control & sensor-automation for Smart Lighting products and design and development of mobile app for remote monitoring and control.

## Requirements

- Automated light dimming & On/Off control based on room occupancy and ambient light
- Wireless control through BLE wireless mesh network
- iOS/Android/Web control App development

## Solution

- ARM Cortex-M4 Core based low power SoC Embedded Control System
- BLE Wireless Module EFR32MG12 for Wireless Communication
- BT compatible iOS/Android mobile app dev.
- Wi-Fi network ready for cloud connectivity
- Embedded AES-256/128 Hardware Crypto

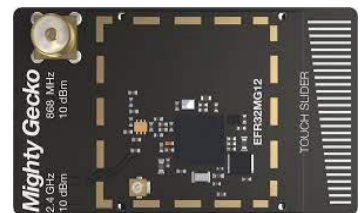


- Remote monitoring and control
- Scene creation
- Automatic scheduling & Dimming
- Commissioning/ Provisioning of new devices,
- User Access control



### LED Module

- 90 to 265 VAC Input range
- 35 , 55 ,70 % Dimming
- Metal core PCB for heat dissipation
- Inbuilt BLE Module



### Wireless BLE Module

- BLE 5.0 Compliance
- EFR32 Mighty Gecko Mesh Wireless SoCs
- Wireless Sensors